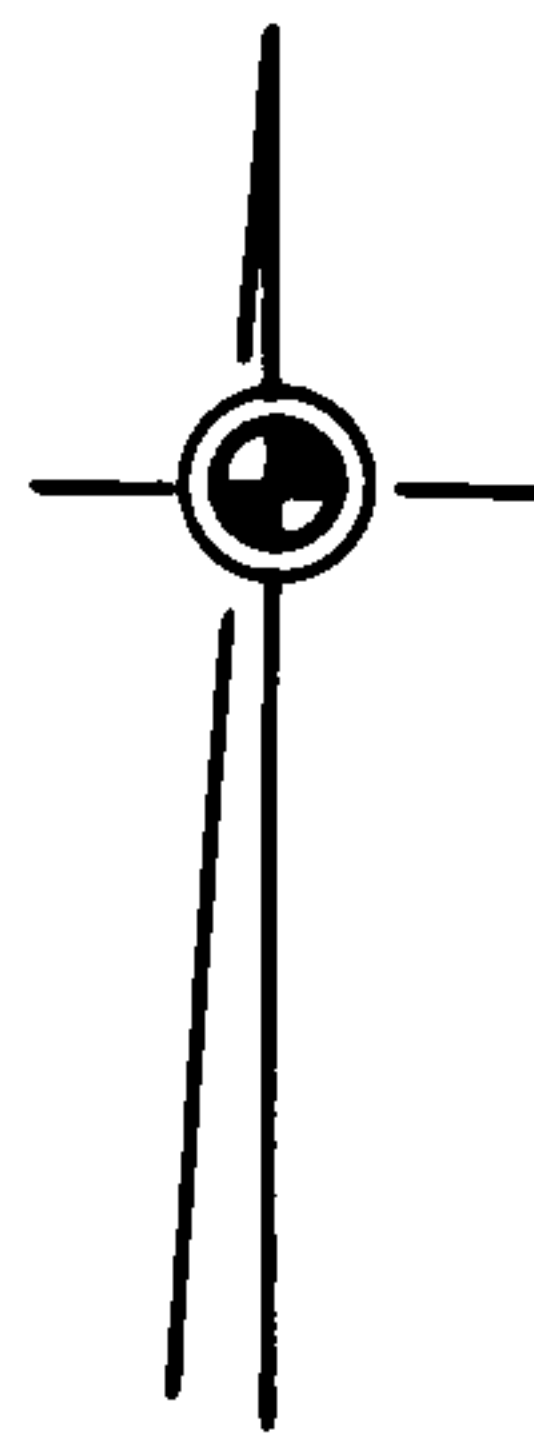
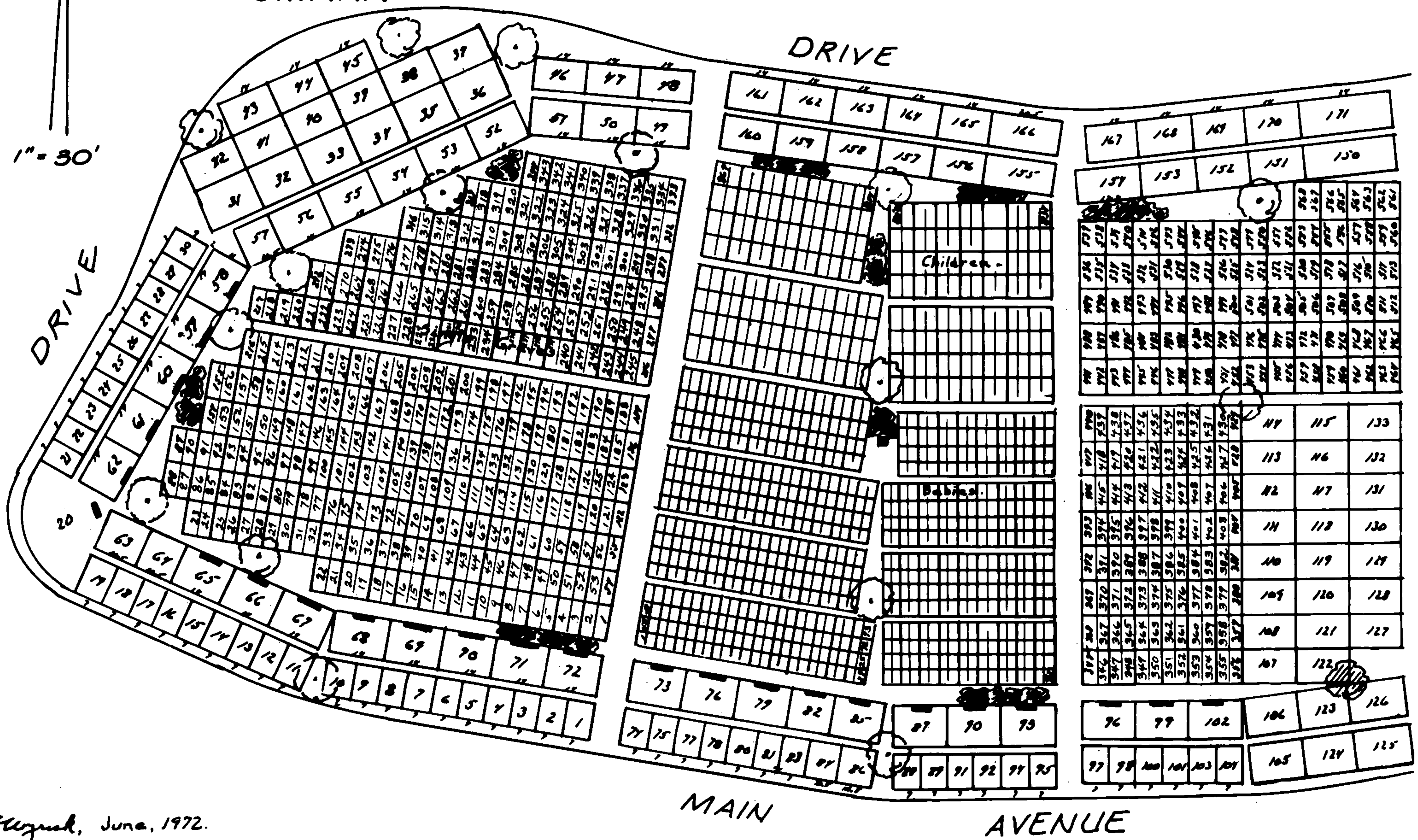


SECTION 17W, FOREST-LAWN-MEMORIAL. THE "GARDEN OF PEACE."

FOREST LAWN
OMAHA

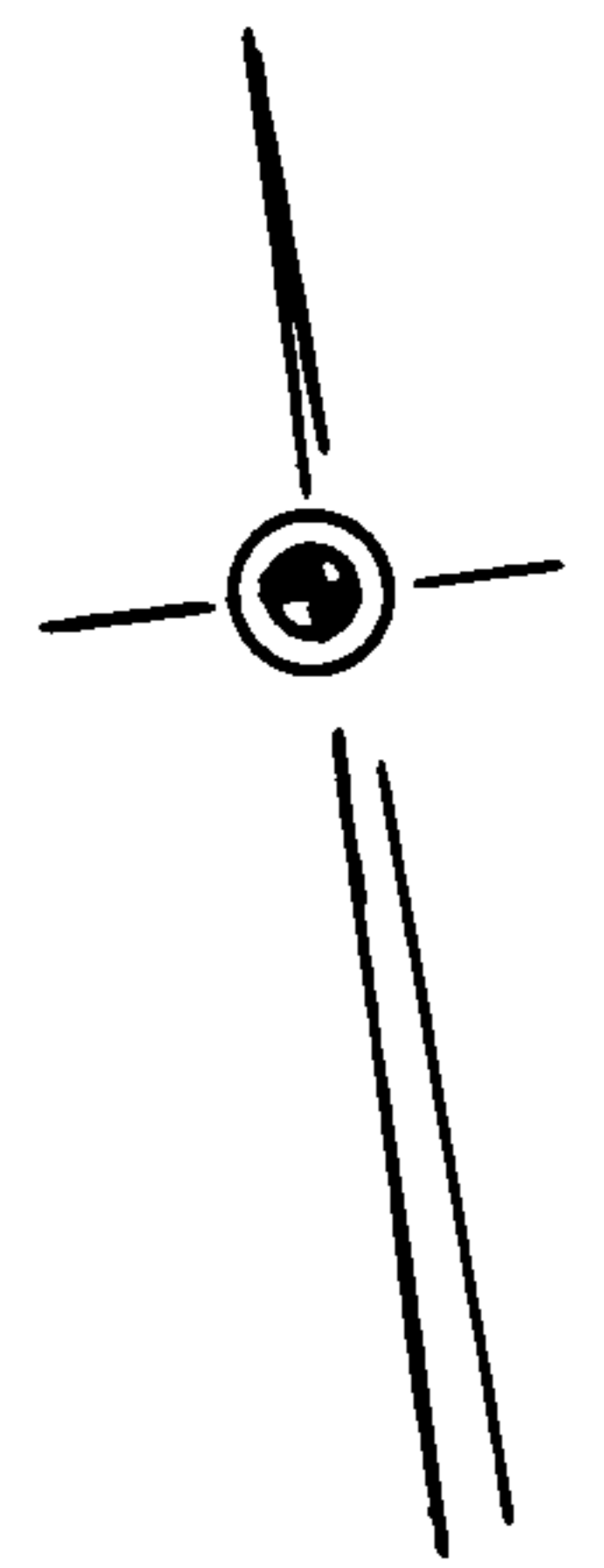


Scale: 1" = 30'



By Flugrad, June, 1972.

BABY AND CHILD GRAVES, SEC. 17 M. FOREST LAWN, OMAHA.

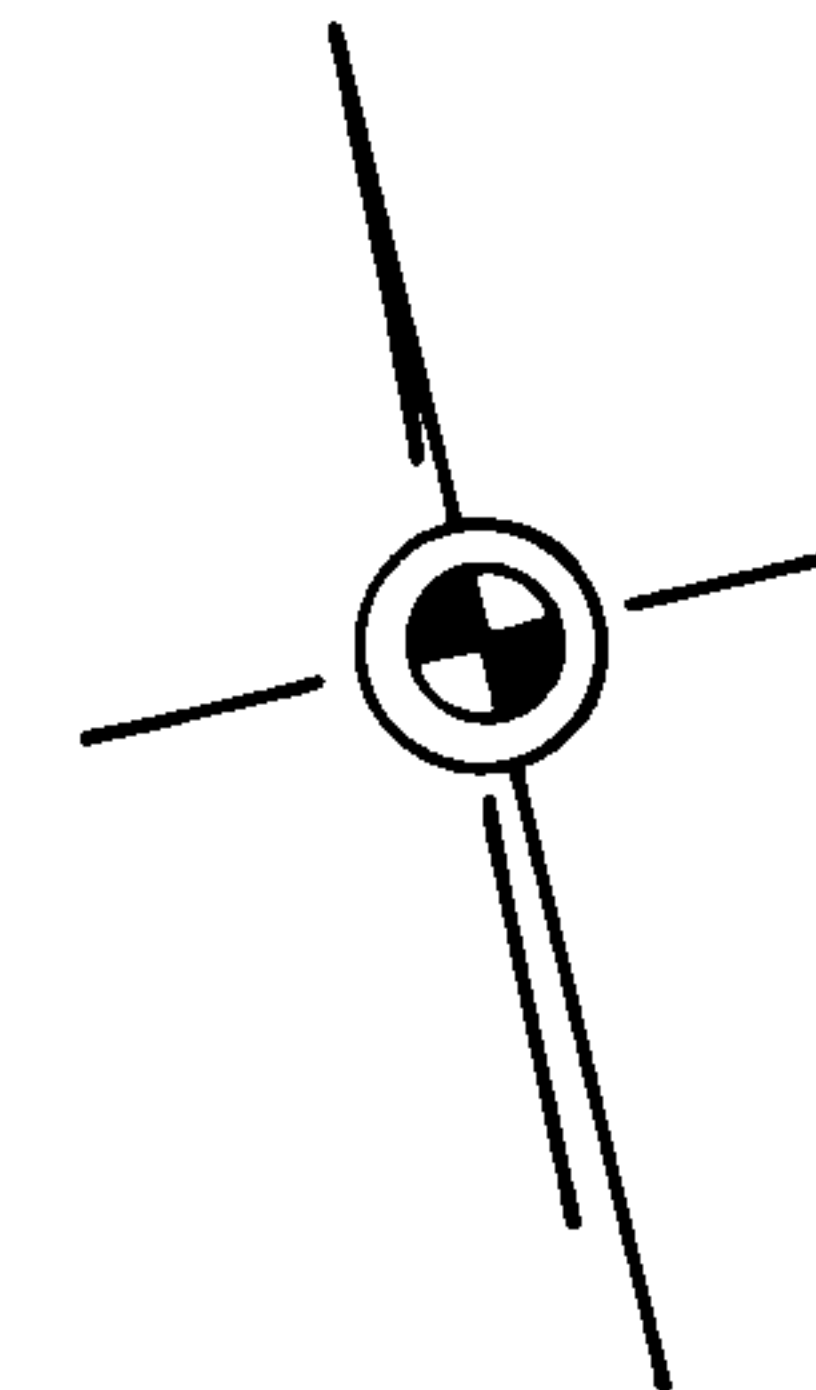


Scale: 1" = 12'

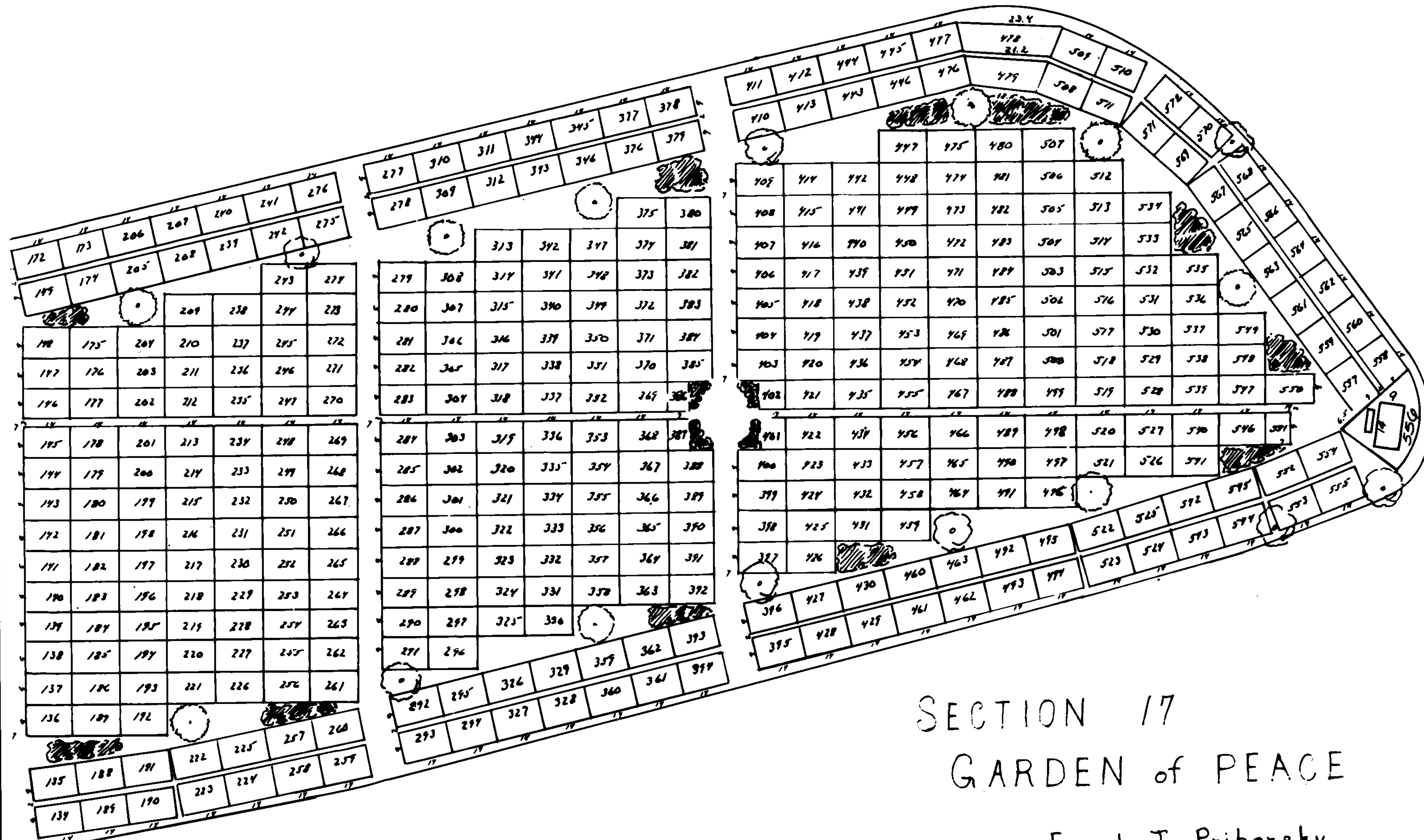


BABY & CHILD GRAVES
SECTION 17M

GARDEN OF PEACE EAST SECTION 17 W FOREST LAWN - OMAHA



Scale : 1" = 40'



SECTION 17
GARDEN of PEACE

Frank J. Priborsky
General Manager