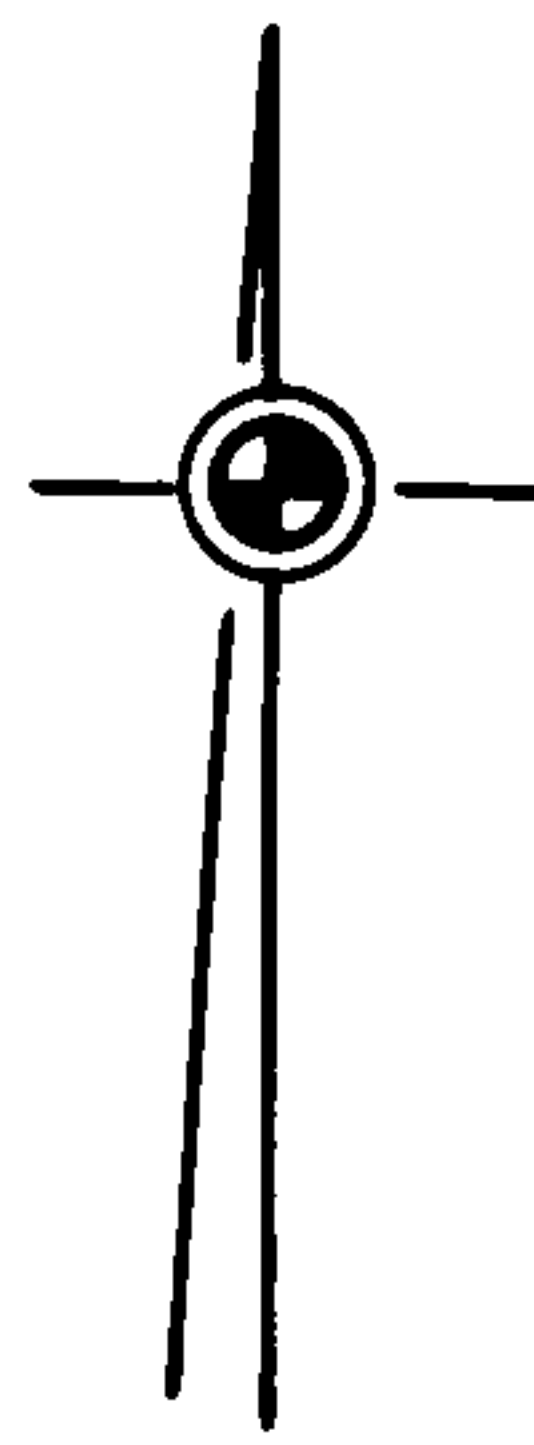
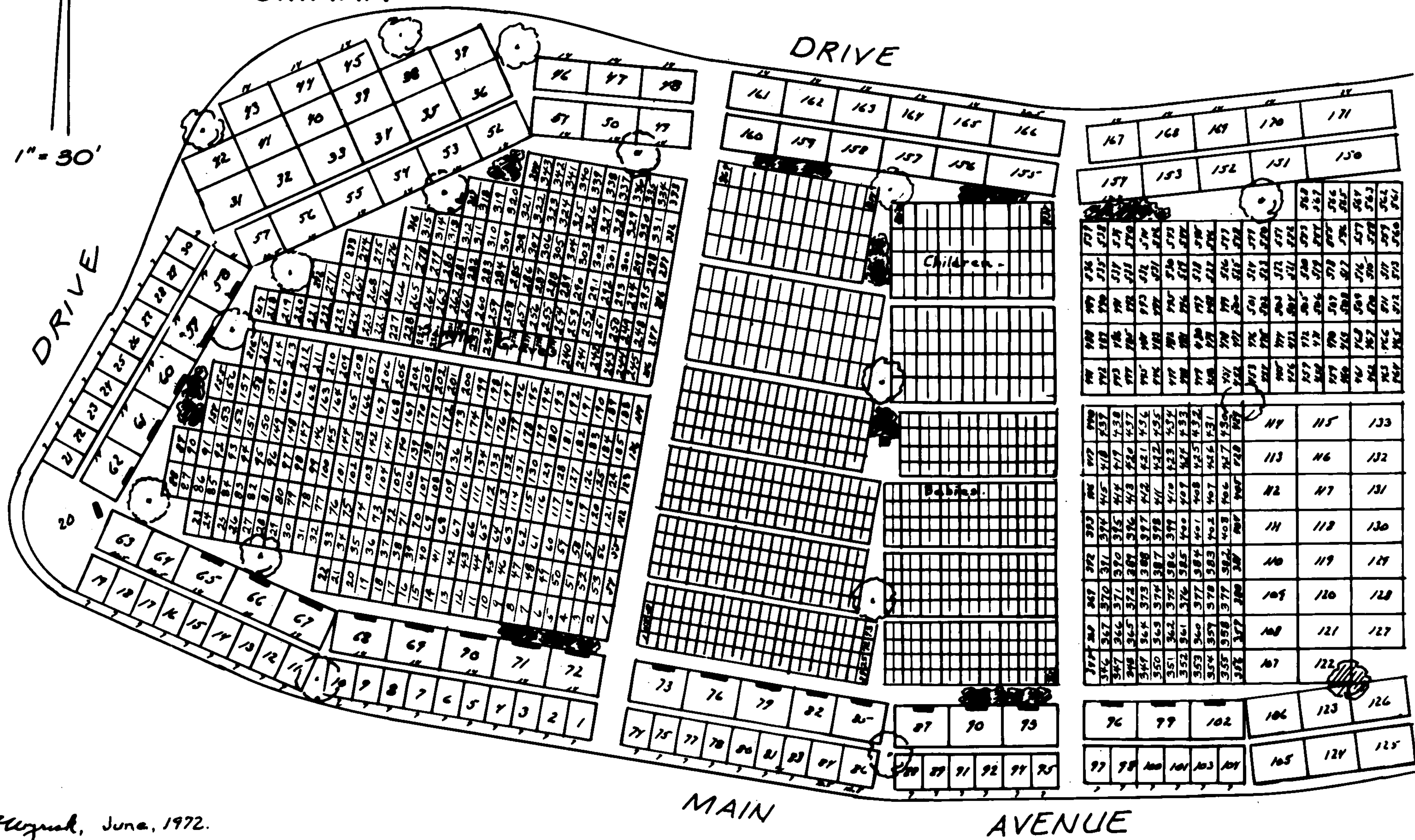


SECTION 17W, FOREST-LAWN-MEMORIAL. THE "GARDEN-OF-PEACE."

FOREST LAWN
OMAHA

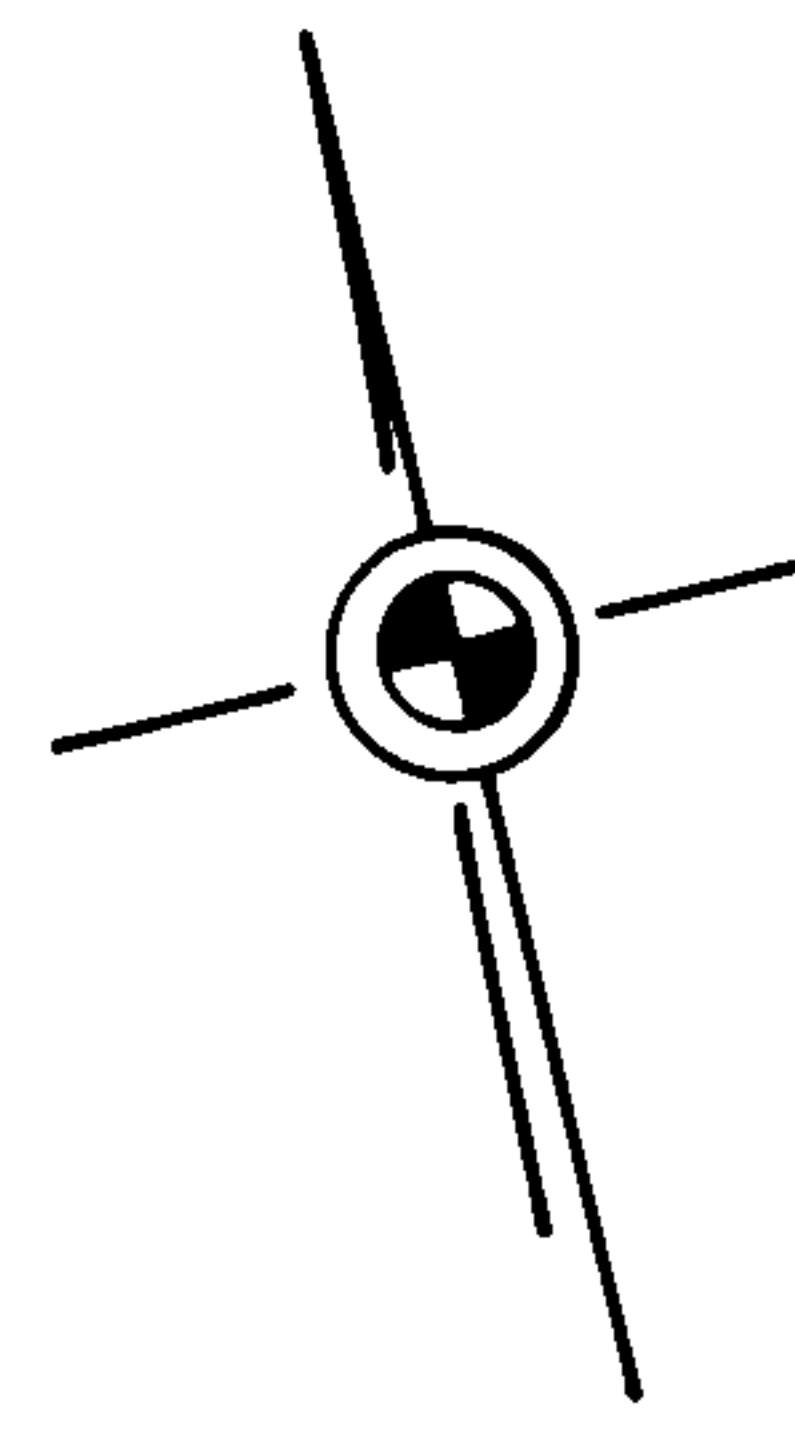


Scale: 1" = 30'

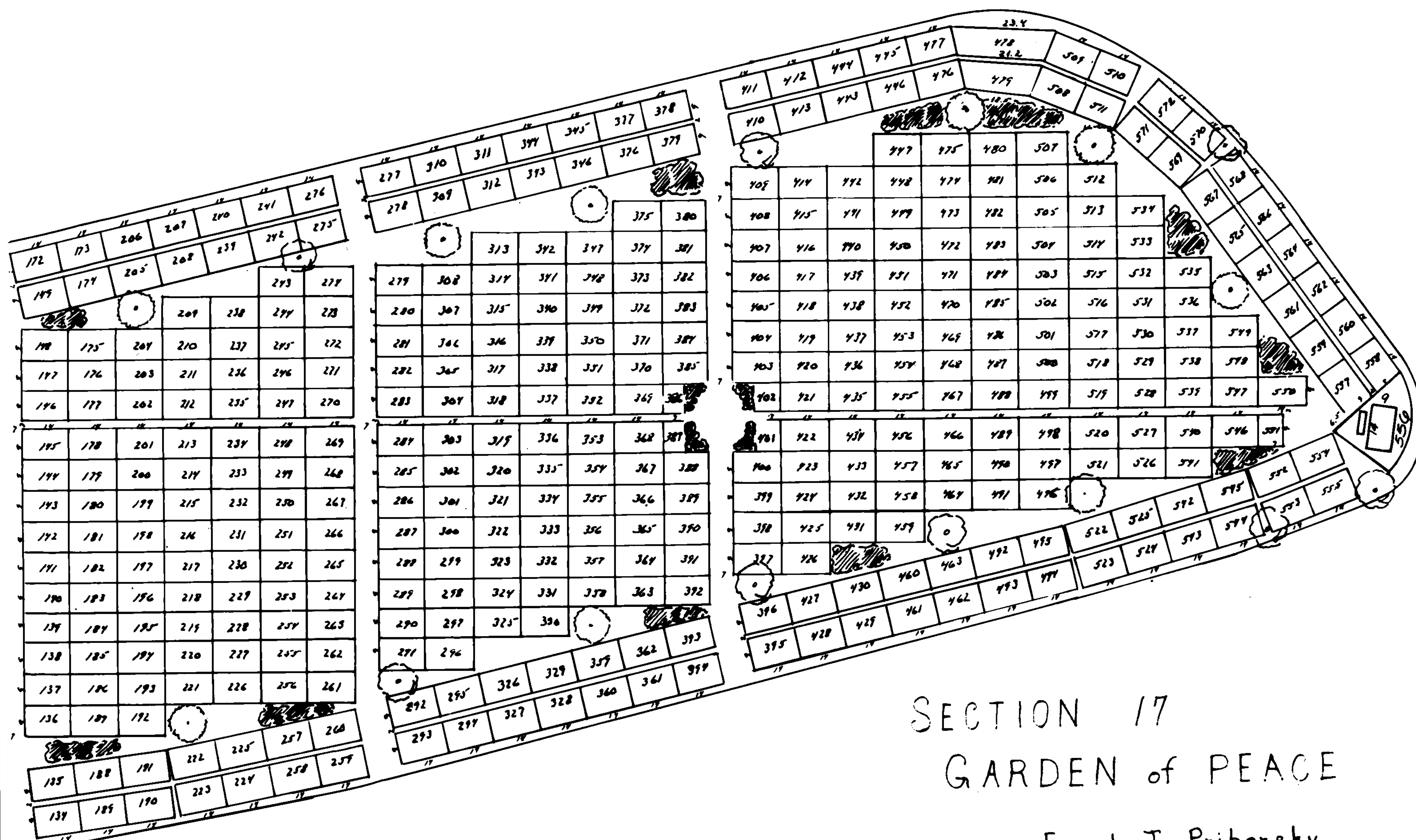


By Flugrad, June, 1972.

GARDEN OF PEACE EAST SECTION 17 W FOREST LAWN - OMAHA



Scale : 1" = 40'



SECTION 17
GARDEN of PEACE

Frank J. Priborsky
General Manager