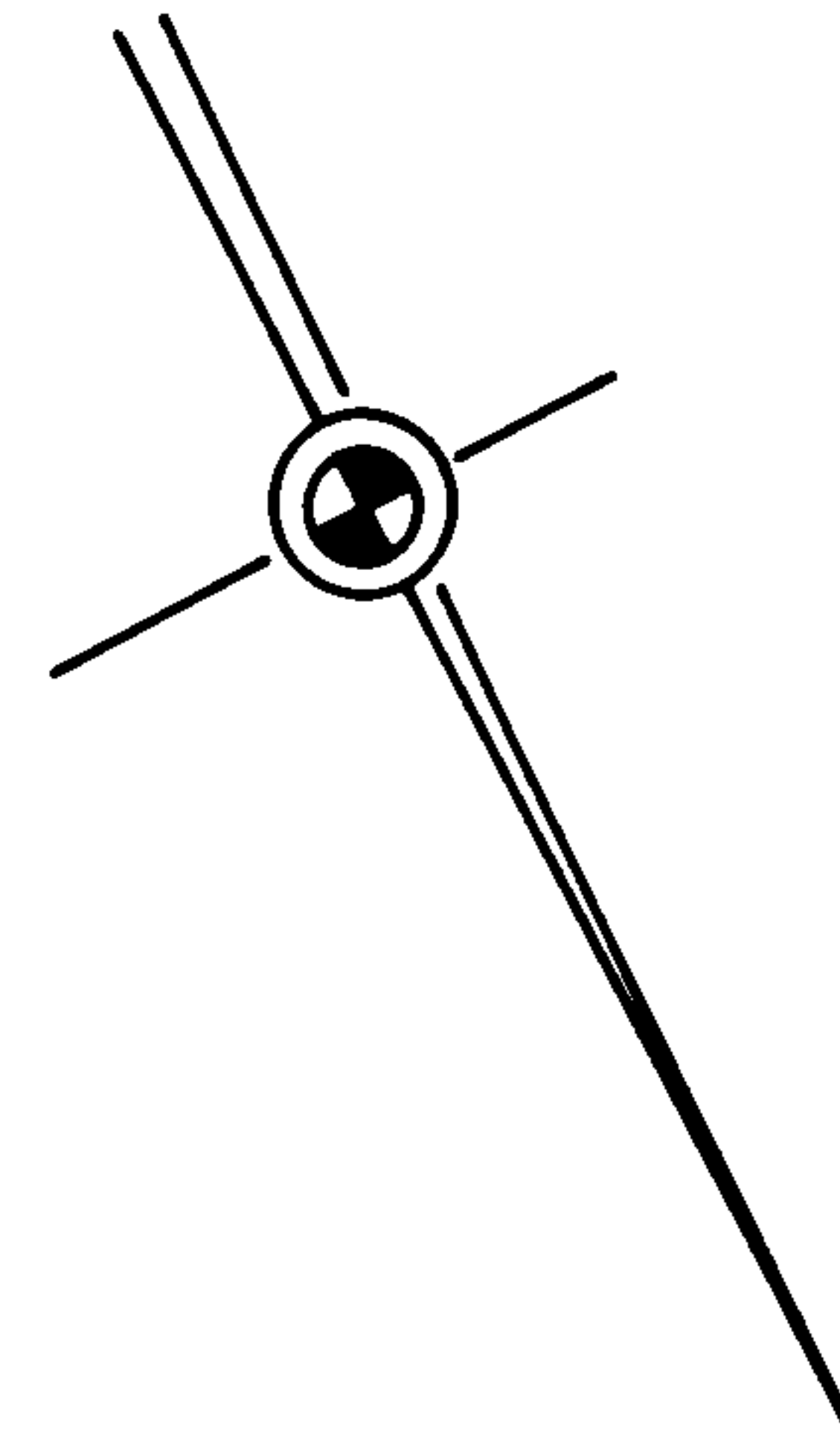
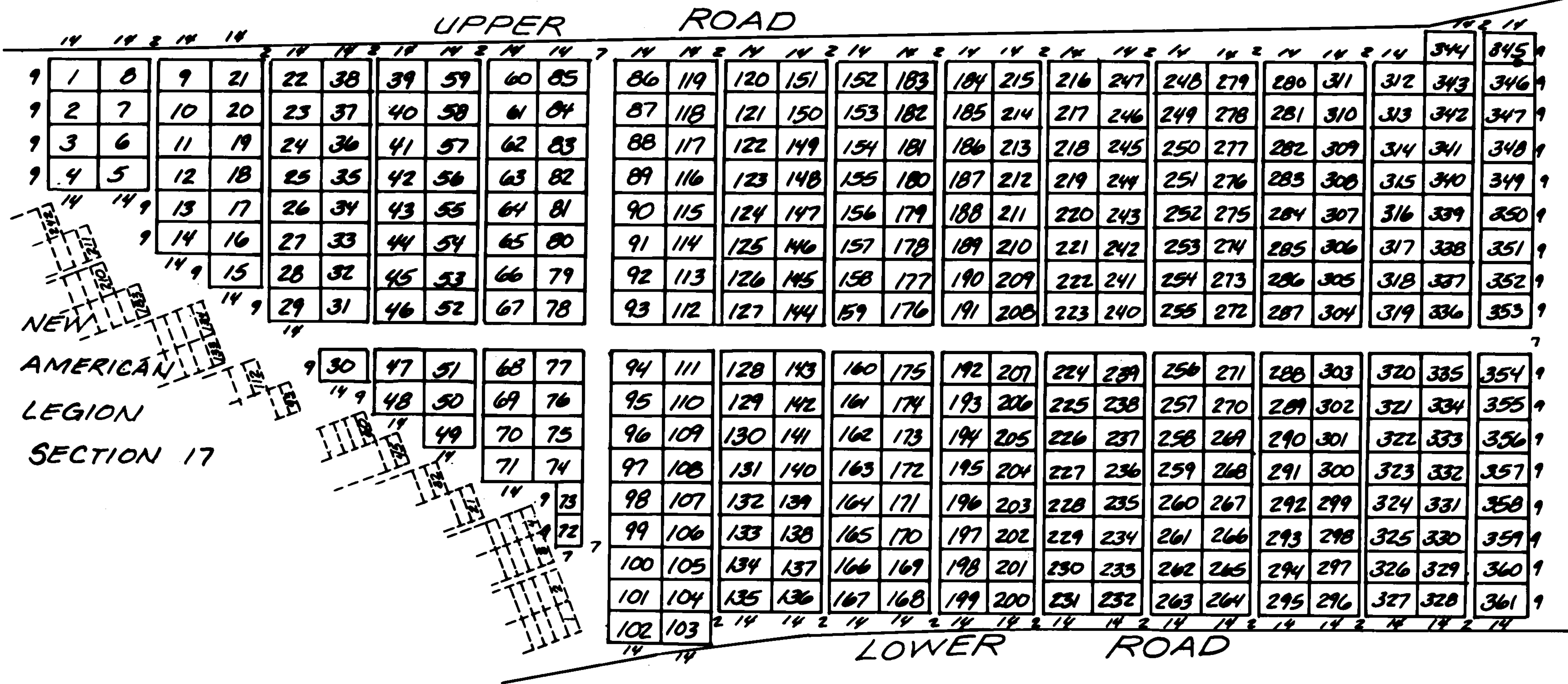


NEW AMERICAN LEGION SECTION 17 PART I
 FOREST LAWN MEMORIAL PARK
 OMAHA, NEBRASKA



SCALE: 1" = 35'



SEC. 17, PART 2, NEW AMERICAN LEGION, FOREST LAWN, OMAHA.

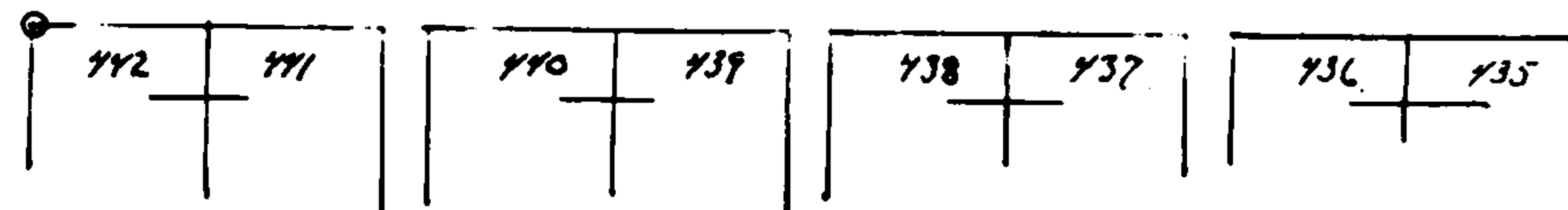
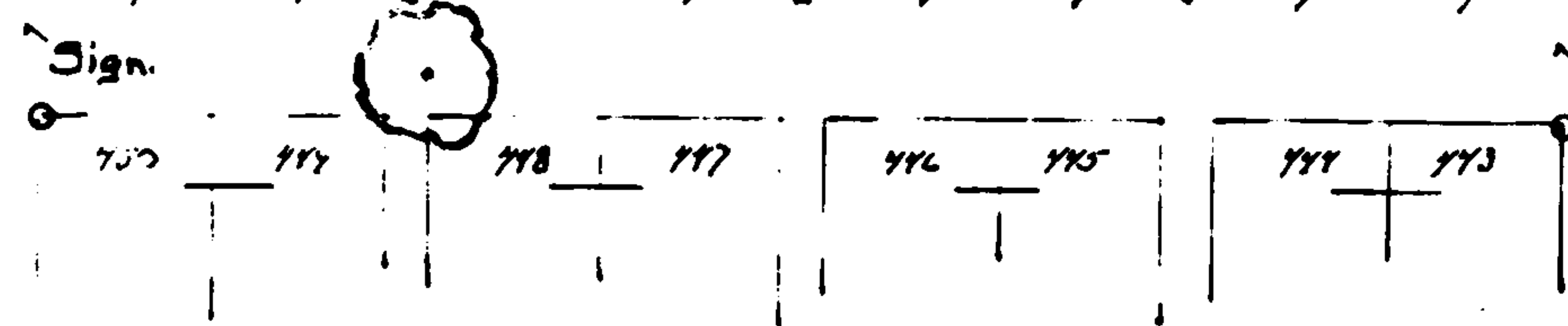
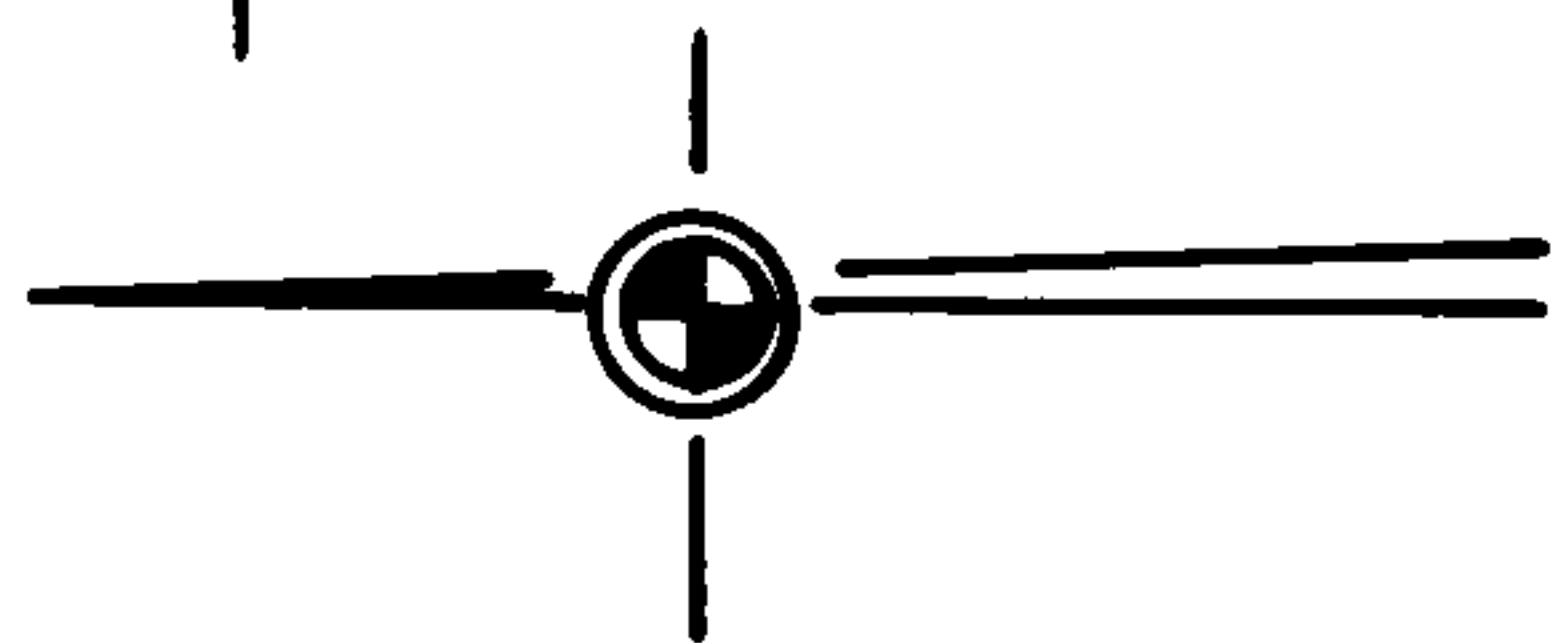
LOWER ROAD
Driveway

| | | | | | | | |
|-----|-----|-----|-----|-----|-----|-----|-----|
| 478 | 479 | 534 | 535 | 590 | 591 | 646 | 647 |
| 477 | 480 | 533 | 536 | 589 | 592 | 645 | 648 |
| 476 | 481 | 532 | 537 | 588 | 593 | 644 | 649 |
| 475 | 482 | 531 | 538 | 587 | 594 | 643 | 650 |
| 474 | 483 | 530 | 539 | 586 | 595 | 642 | 651 |
| 473 | 484 | 529 | 540 | 585 | 596 | 641 | 652 |
| 472 | 485 | 528 | 541 | 584 | 597 | 640 | 653 |
| 471 | 486 | 527 | 542 | 583 | 598 | 639 | 654 |
| 470 | 487 | 526 | 543 | 582 | 599 | 638 | 655 |
| 469 | 488 | 525 | 544 | 581 | 600 | 637 | 656 |
| 468 | 489 | 524 | 545 | 580 | 601 | 636 | 657 |
| 467 | 490 | 523 | 546 | 579 | 602 | 635 | 658 |
| 466 | 491 | 522 | 547 | 578 | 603 | 634 | 659 |
| 465 | 492 | 521 | 548 | 577 | 604 | 633 | 660 |
| 464 | 493 | 520 | 549 | 576 | 605 | 632 | 661 |
| 463 | 494 | 519 | 550 | 575 | 606 | 631 | 662 |
| 462 | 495 | 518 | 551 | 574 | 607 | 630 | 663 |
| 461 | 496 | 517 | 552 | 573 | 608 | 629 | 664 |
| 460 | 497 | 516 | 553 | 572 | 609 | 628 | 665 |
| 459 | 498 | 515 | 554 | 571 | 610 | 627 | 666 |
| 458 | 499 | 514 | 555 | 570 | 611 | 626 | 667 |
| 457 | 500 | 513 | 556 | 569 | 612 | 625 | 668 |
| 456 | 501 | 512 | 557 | 568 | 613 | 624 | 669 |
| 455 | 502 | 511 | 558 | 567 | 614 | 623 | 670 |
| 454 | 503 | 510 | 559 | 566 | 615 | 622 | 671 |
| 453 | 504 | 509 | 560 | 565 | 616 | 621 | 672 |
| 452 | 505 | 508 | 561 | 564 | 617 | 620 | 673 |
| 451 | 506 | 507 | 562 | 563 | 618 | 619 | 674 |

| | | | | | | | |
|-----|-----|-----|-----|-----|-----|-----|-----|
| 702 | 703 | 758 | 759 | 814 | 815 | 870 | 871 |
| 701 | 704 | 757 | 760 | 813 | 816 | 869 | 872 |
| 700 | 705 | 756 | 761 | 812 | 817 | 868 | 873 |
| 699 | 706 | 755 | 762 | 811 | 818 | 867 | 874 |
| 698 | 707 | 754 | 763 | 810 | 819 | 866 | 875 |
| 697 | 708 | 753 | 764 | 809 | 820 | 865 | 876 |
| 696 | 709 | 752 | 765 | 808 | 821 | 864 | 877 |
| 695 | 710 | 751 | 766 | 807 | 822 | 863 | 878 |
| 694 | 711 | 750 | 767 | 806 | 823 | 862 | 879 |
| 693 | 712 | 749 | 768 | 805 | 824 | 861 | 880 |
| 692 | 713 | 748 | 769 | 804 | 825 | 860 | 881 |
| 691 | 714 | 747 | 770 | 803 | 826 | 859 | 882 |
| 690 | 715 | 746 | 771 | 802 | 827 | 858 | 883 |
| 689 | 716 | 745 | 772 | 801 | 828 | 857 | 884 |
| 688 | 717 | 744 | 773 | 800 | 829 | 856 | 885 |
| 687 | 718 | 743 | 774 | 799 | 830 | 855 | 886 |
| 686 | 719 | 742 | 775 | 798 | 831 | 854 | 887 |
| 685 | 720 | 741 | 776 | 797 | 832 | 853 | 888 |
| 684 | 721 | 740 | 777 | 796 | 833 | 852 | 889 |
| 683 | 722 | 739 | 778 | 795 | 834 | 851 | 890 |
| 682 | 723 | 738 | 779 | 794 | 835 | 850 | 891 |
| 681 | 724 | 737 | 780 | 793 | 836 | 849 | 892 |
| 680 | 725 | 736 | 781 | 792 | 837 | 848 | 893 |
| 679 | 726 | 735 | 782 | 791 | 838 | 847 | 894 |
| 678 | 727 | 734 | 783 | 790 | 839 | 846 | 895 |
| 677 | 728 | 733 | 784 | 789 | 840 | 845 | 896 |
| 676 | 729 | 732 | 785 | 788 | 841 | 844 | 897 |
| 675 | 730 | 731 | 786 | 787 | 842 | 843 | 898 |

TOP ROAD
CANNON

Scale: 1" = 20'



R.F.W. July 1973.